



M / S . N.R. RUBBER INDUSTRIES.

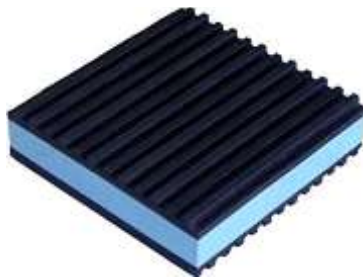
7 SOUTH TANGRA ROAD, KOLKATA – 700046. INDIA.

Mob: 94330 98940, 98743 19408

Email: nr.rubber@yahoo.com Web: www.nrrubberindustry.com

FOME SANDWICH RUBBER PAD

MODEL NO. NRFSRP – 111



MODEL	SIZE (Inches)
NRFSRP – 111	18" X 18" X 7/8"
NRFSRP – 111 - A	12" X 12" X 7/8"
NRFSRP – 111 - B	8" X 8" X 7/8"
NRFSRP – 111 - C	6" X 6" X 7/8"
NRFSRP – 111 - D	4" X 4" X 7/8"
NRFSRP – 111 - E	3" X 3" X 7/8"
NRFSRP – 111 - F	2" X 2" X 7/8"

APPLICATION

- Wherever bolting is to be avoided non-critical vibration conditions exist. (pumps, motors, air-conditioning unit's, generators etc.)
- Recommended for acoustic problem application and suitable for outdoor use.
- Suitable for outdoor use.

NOTES

1. Material: Natural Rubber / Neoprene - S/A – 55° ± 5°
2. Type (1) :- 8 mm thickness Rib Rubber Sheet (High & low) + Low density 6mm thickness EVA Foam in center + Rib Rubber Sheet (High & low) - 8 mm thickness.
3. Type (2) :- 6 mm thickness Rib Rubber Sheet + Low density 10 mm thickness EVA Foam in center + 6mm thickness Rib Rubber Sheet.
4. Maximum loading: 70 lbs/sq.in.
5. Working range: 15 to 60 lbs/sq.in.

FEATURES

- Closed cell construction with excellent sound attenuation capability.
- No bolting required , simple field installation.
- Excellent resistance of oil and water. (Recommended for outdoor use)
- Higher deflection than conventional rubber- cork and all rubber Pads.
- 100% Surface contact with equipment.